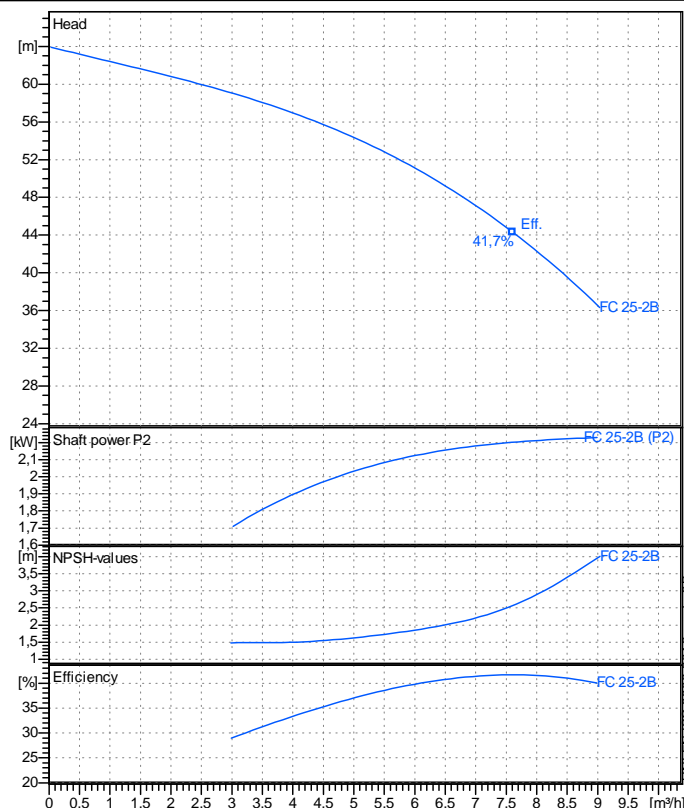


Receiver

From

Company name  
Respons. Department  
Person in charge  
Phone number  
Fax no  
E-mail address



### Operating data specification

Nominal flow	m³/h	0
Nominal head	m	0
Static head	m	0
NPSH - v value of plant	m	0
Inlet pressure	bar	0,09793
Fluid	Water, pure	
Operating temperature t A	°C	20
Density at t A	kg/m³	998,3
Kin. viscosity at t A	mm²/s	1,005

### Pump

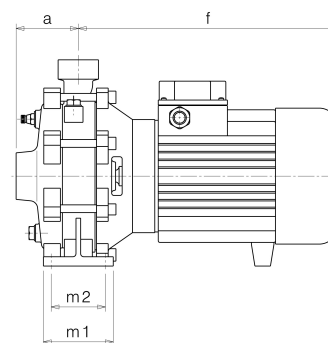
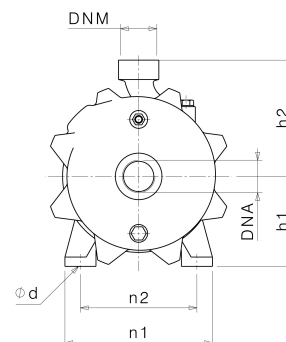
Pump name		FC 25-2B	
Size			
Design			
Speed	rpm	2850	No of stages 2
Impeller type			
Flow	Nominal	m³/h	
	Max-	m³/h	9,04
	Min-	m³/h	0,0351
Head	Nominal	m	
	Max-	m	63,9
	Min-	m	36,3
Head H(Q=0)		m	64
NPSH 3%		m	
Max. working pressure		bar	6,27
Shaft power		kW	
Efficiency		%	
Max absorbed power		kW	2,2293

### Materials Pump

Shaf t	Stainless steel AISI 431 (1.4057)		
Impeller	Brass		
Pump body	Cast iron EN-GJL-200		
Support	Aluminium		
OR	NBR Rubber		
Mechanical seal	BXPB (Gra/Cer/NBR)		

### Dimensions in mm

a 80  
DNA G 1 1/4"  
DNM G 1"  
f 313  
h1 115  
h2 150  
m1 90  
m2 70  
n1 190  
n2 150  
od 12



Remarks:

Project	Project ID	Created by	Created on	Last update
			2019-02-13	