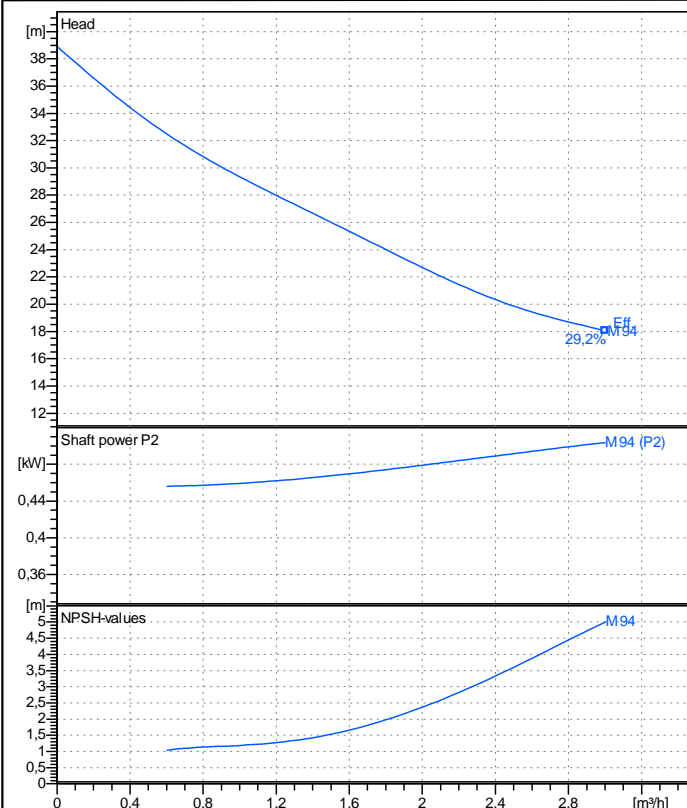
	Technical data M 94		Revision no <div style="border: 1px solid black; height: 15px; width: 100px;"></div>	Page: 1
	Receiver		From	
Company name Respons. Department Person in charge Phone number Fax no E-mail address	<div style="border: 1px solid black; height: 40px;"></div>			



Operating data specification

Nominal flow	m³/h 0
Nominal head	m 0
Static head	m 0
NPSH - v value of plant	m 0
Inlet pressure	bar 0,09793
Fluid	Water, pure
Operating temperature t A	°C 20
Density at t A	kg/m³ 998,3
Kin. viscosity at t A	mm²/s 1,005

Pump

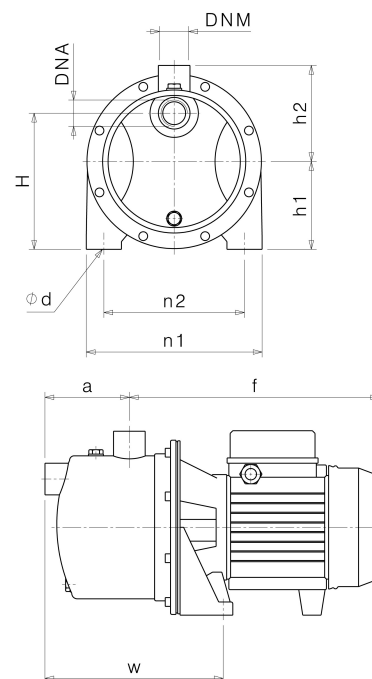
Pump name	M 94		
Size			
Design			
Speed rpm	2850	No of stages	1
Impeller type			
Flow	Nominal	m³/h	
	Max-	m³/h	3,02
	Min-	m³/h	0
Head	Nominal	m	
	Max-	m	38,9
	Min-	m	18
Head H(Q=0)	m	38,9	
NPSH 3%	m		
Max. working pressure	bar	3,81	
Shaft power	kW		
Efficiency	%		
Max absorbed power	kW	0,50377	

Materials Pump

Pump body	Stainless steel AISI 304 (1.4301)		
Impeller	Thermoplastic resin		
Seal disc	Stainless steel AISI 304 (1.4301)		
Shaft	Stainless steel AISI 420 (1.4028)		
Diffuser	Thermoplastic resin		
Complete ejector	Thermoplastic resin		
Tenuta meccanica	BXPB (Gra/Cer/NBR)		

Dimensions in mm

a	98
DNA	G 1"
DNM	G 1"
f	247
H	155
h1	100
h2	106
n1	200
n2	160
od	10
w	209



Remarks:

Project	Project ID	Created by	Created on	Last update
			2019-02-13	